



Door Style Options



ADD 5% FOR SHAKER DOORS

Outdoor Drawer
3-Drawers



ITEM	WIDTH
3DBC-153528	15"
3DBC-183528	18"
3DBC-213528	21"
3DBC-243528	24"
3DBC-273528	27"
3DBC-303528	30"
3DBC-333528	33"
3DBC-363528	36"

1 Drawer: 5.5"H
Drawer 2 -3: 9.75"H

Outdoor Drawer
4-Drawers



ITEM	WIDTH
ODBC-153528	15" W
ODBC-183528	18" W
ODBC-213528	21" W
ODBC-243528	24" W
ODBC-273528	27" W
ODBC-303528	30" W
ODBC-333528	33" W
ODBC-363528	36" W

Drawers 1-3: 5.5"H
Drawer 4: 7"H

Outdoor Sink



ITEM	WIDTH
OSB-183528	18"
OSB-213528	21"
OSB-243528	24"
OSB-273528	27"
OSB-303528	30"
OSB-333528	33"
OSB-363528	36"
OSB-393528	39"
OSB-423528	42"
OSB-453528	45"
OSB-483528	48"

False Panel at Top
12" - 24" = 1 Door (LH or RH)
27" - 48" = 2 Door (LH/RH)
No shelf, No drawer



Outdoor Single Drawer Door



1 Drawer: 5.5"H
 1 Full Width Adj Shelf
 12" - 24" = 1 Door (LH or RH)
 27" - 36" = 2 Door (LH/RH)

ITEM	WIDTH
OSDDB-153528	15"
OSDDB-183528	18"
OSDDB-213528	21"
OSDDB-243528	24"
OSDDB-273528	27"
OSDDB-303528	30"
OSDDB-333528	33"
OSDDB-363528	36"

Outdoor Door Base



1 Full Width Adj Shelf
 12" - 24" = 1 Door (LH or RH)
 27" - 54" = 2 Door (LH/RH)

ITEM	WIDTH
ODB-123528	12"
ODB-153528	15"
ODB-183528	18"
ODB-213528	21"
ODB-243528	24"
ODB-273528	27"
ODB-303528	30"
ODB-333528	33"
ODB-363528	36"
ODB-393528	39"
ODB-483528	48"
ODB-543528	54"

Outdoor Internal Slide-Out Door



2 Internal Slide Outs (1 Top Middle, 1 Floor Mount)
 1 Door (LH or RH)

ITEM	WIDTH
OISDB-243528	24"

Outdoor Inside Corner



1 Door (LH or RH)
 1 Full Width Adj Shelf
 Door Width = 13.75"
 CANNOT be at End of Cabinet Run or Beside Opening

ITEM	WIDTH
OICCB-403528	40"



Outdoor Blind



- 1 Door (LH or RH)
- 1 Full Width Adj Shelf
- 3" Filler panel recommended for door clearance

ITEM	WIDTH
OBBC-483528	48"

Outdoor Blind with Rear Access



- 2- Door (LH or RH)
- 1 Full Width Adj Shelf
- 3" Filler panel recommended for door clearance

ITEM	WIDTH
OBBCRA-483528	48"

Outdoor Pull-Out Propane



- Vented
- 1 Drawer: 5.5"H
- Slide Out Tray for LP Tank

ITEM	WIDTH
OPC-213528	21"

Outdoor Drop-in Propane



- Vented
- 1 Drawer: 5.5"H, 1 Door (LH or RH)
- Laser Cut Hole for LP Tank in Floor

ITEM	WIDTH
ODPC-183528	18"
ODPC-243528	24"

Outdoor Waste Bin



- 1 Drawer: 5.5" H
- Slide Out Waste Bin Tray
- 18" Single Waste Bin, 24" Double Waste Bin

ITEM	WIDTH
OWBC-183528	18"
OWBC-243528	24"



Outdoor Open Shelf



ITEM	WIDTH
OOSU-243528	24"

CANNOT be used with an Outdoor Island Base

Outdoor Open Storage



1 Adjustable Shelf

Powder Coat Finished Interior

ITEM	WIDTH	Dealer Cost (PAN)
OOCU-243528	24"	

Outdoor Grill DEEP CUT



Custom Appliance Skirt at Top: 16" Tall

2 Door (LH/RH)

Vented in Floor and Back Panel

Does not Accommodate a LP Tank

ITEM	WIDTH	Dealer Cost (PAN)
OGGBD-363528	36"	
OGGBD-423528	42"	
OGGBD-453528	45"	

Please Provide Appliance(s) Brand & Model

Outdoor Gas Grill / Side Burner



Custom Appliance Skirt: 12" Tall

18" - 27" - Side Burner

30" -66"- Gas Grill Base

12" - 24" = 1 Door (LH or RH)

27" - 48" = 2 Door (LH/RH)

51"-54"= 3 Door (LH/RH/RH)

57" - 66" = 4 Door (LH/RH/LH/RH)

Vented in Floor and Back Panel

Does not Accommodate a LP Tank

ITEM	WIDTH
OGGB-183528	18"
OGGB-213528	21"
OGGB-243528	24"
OGGB-273528	27"
OGGB-303528	30"
OGGB-333528	33"
OGGB-363528	36"
OGGB-393528	39"
OGGB-423528	42"
OGGB-453528	45"
OGGB-483528	48"
OGGB-513528	51"
OGGB-543528	54"
OGGB-573528	57"
OGGB-603528	60"
OGGB-633528	63"
OGGB-663528	66"

Please Provide Appliance(s) Brand & Model



Outdoor Grill & Warming
Drawer



ITEM	WIDTH
OGGWDB-363528	36"
OGGWDB-423528	42"
OGGWDB-483528	48"

Please Provide Appliance(s) Brand & Model

Custom Appliance Skirt at Top: 12" Tall
 Custom False Panel in Bottom Front for Warming Drawer
 Vented in Floor and Back Panel
 Does not Accommodate a LP Tank

Outdoor Memphis
Control Panel



ITEM	WIDTH
OMCB-183528L	18"

False Panel at Top
 Offered as Left Hinge ONLY, Install on Left of Grill Base
 Does NOT include Control Panel Box

Outdoor Door & Drawer
Gas Grill



ITEM	WIDTH
ODDGGB-363528	36"
ODDGGB-423528	42"
ODDGGB-453528	45"

Please Provide Appliance(s) Brand & Model

Custom Appliance Skirt: 12" Tall
 Drawer 1 & 2: 7.2" H
 1 Door (RH ONLY) 15.69" W x 16" H
 Vented in Back Panel
 Does not Accommodate a LP Tank

Outdoor Evo Grill



ITEM	WIDTH
OEGB-393534	39" (34"Deep)

Please Provide Appliance(s) Brand & Model

2 Door (LH/RH)
 Does not Accommodate a LP Tank



Outdoor Power Burner



ITEM	WIDTH
OPBB-243528	24"
OPBB-303528	30"
OPBB-363528	36"

Please Provide Appliance(s) Brand & Model

Custom Appliance Shelf Height/Width

1 Drawer: 10" H

CANNOT be at End of Cabinet Run or Beside Opening

Outdoor Ceramic Grill



Shelf Height Adjusts to Grill Brand/Model

24" - 1 Door (LH or RH),

30" & 33" - 2 Door (LH/RH)

24"W - Med. or LG. Grill , 30"&33"W - LG or XL Grill

28"D for Med or LG Grill, 30"D for LG or XL Grill

ITEM	WIDTH
OCGC-243528	24"
OCGC-303528	30"
OCGC-243530	24" (30" deep)
OCGC-303530	30" (30" deep)
OCGC-303532	30" (32" deep)
OCGC-303536	30" (36" deep)
OCGC-333530	33" (30" deep)

Please Provide Appliance(s) Brand & Model

Island is recommended. If unit is to remain stationary against a wall, the cabinet must be 28" Deep for a Medium Grill, 32" Deep for a Large Grill, and 36" Deep for an Extra Large Grill. (Kamado Joe II & III are exempt from these specifications due to Hinge Size & Grill Height)

Inside Corner Ceramic Grill



Shelf Height Adjusts to Grill Brand/Model

1 Door (LH or RH) Width = 13.75"

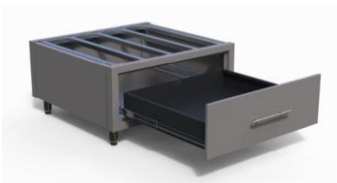
Med., LG., or XL Grill

CANNOT be at End of Cabinet Run or Beside Opening

ITEM	WIDTH
OICGC-403528	40"

Please Provide Appliance(s) Brand & Model

Outdoor Ceramic Grill Stand



1 Drawer: 10" H

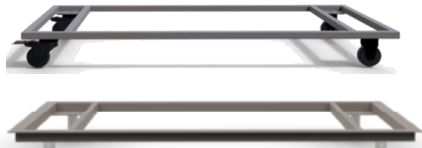
ITEM	DIMENSIONS
OCGS-301728	30"W X 17" H

Please Provide Appliance(s) Brand & Model

Island is recommended. If unit is to remain stationary against a wall, the cabinet must be offset to accommodate certain Grill Brands/Models.



Outdoor Island



Available with Legs 4" H Adjustable or 3" H Casters
 12"-71" = 4 Casters/Legs, 72"-96" = 6 Casters/ Legs
 CANNOT be used with Free Standing Appliances (ex:
 refer)

Color Matches Cabinet Frame

Used for One Piece Build (Comparable to Coastals)

ITEM	WIDTH
OIB-12-48" x 24.875"D	12" - 48"
OIB-12-48 x 26.875"D	12" - 48"
OIB-49-72 x 24.875"D	49" - 72"
OIB-49-72 x 26.875"D	49" - 72"
OIB-73-96 x 24.875"D	73" - 96"
OIB-73-96 x 26.875"D	73" - 96"

3.125" Shallower than cabinets

Example 28"D cabinet- 3.125"= 24.875"D Outdoor Island Base

Island Base with Casters adds 1 7/8" to Cabinet Height

Island Base with Legs adds 1 9/16" to Cabinet Height

78" Outdoor Locker



1 Door (LH or RH)

1 Full Width Adjustable Shelves

1 Full Width Adjustable Shelf with Coat Hanger

Must be Attached to a Wall

Cannot be used with an Outdoor Island Base

ITEM	WIDTH
OCL-187829.5	18"
OCL-217829.5	21"
OCL-247829.5	24"
OCL-277829.5	27"
OCL-307829.5	30"

84" Outdoor Locker



1 Door (LH or RH)

1 Full Width Adjustable Shelves

1 Full Width Adjustable Shelf with Coat Hanger

Must be Attached to a Wall

Cannot be used with an Outdoor Island Base

ITEM	WIDTH
OCL-188429.5	18"
OCL-218429.5	21"
OCL-248429.5	24"
OCL-278429.5	27"
OCL-308429.5	30"



BASE CABINET OPTIONS																						
Base Additional Shelf	 <p>Not Available for All Base Cabinets</p>	<table border="1"> <thead> <tr> <th>ITEM</th> <th>WIDTH</th> </tr> </thead> <tbody> <tr><td>BLAS-1828</td><td>18"</td></tr> <tr><td>BLAS-2128</td><td>21"</td></tr> <tr><td>BLAS-2428</td><td>24"</td></tr> <tr><td>BLAS-2728</td><td>27"</td></tr> <tr><td>BLAS-3028</td><td>30"</td></tr> </tbody> </table>	ITEM	WIDTH	BLAS-1828	18"	BLAS-2128	21"	BLAS-2428	24"	BLAS-2728	27"	BLAS-3028	30"								
	ITEM	WIDTH																				
	BLAS-1828	18"																				
	BLAS-2128	21"																				
	BLAS-2428	24"																				
	BLAS-2728	27"																				
BLAS-3028	30"																					
Outdoor 18" H Overhead	 <p>12" - 24" = 1 Door (LH or RH) 27" - 36" = 2 Door (LH/RH)</p>	<table border="1"> <thead> <tr> <th>ITEM</th> <th>WIDTH</th> </tr> </thead> <tbody> <tr><td>KOC-121812</td><td>12"</td></tr> <tr><td>KOC-151812</td><td>15"</td></tr> <tr><td>KOC-181812</td><td>18"</td></tr> <tr><td>KOC-211812</td><td>21"</td></tr> <tr><td>KOC-241812</td><td>24"</td></tr> <tr><td>KOC-271812</td><td>27"</td></tr> <tr><td>KOC-301812</td><td>30"</td></tr> <tr><td>KOC-331812</td><td>33"</td></tr> <tr><td>KOC-361812</td><td>36"</td></tr> </tbody> </table>	ITEM	WIDTH	KOC-121812	12"	KOC-151812	15"	KOC-181812	18"	KOC-211812	21"	KOC-241812	24"	KOC-271812	27"	KOC-301812	30"	KOC-331812	33"	KOC-361812	36"
	ITEM	WIDTH																				
	KOC-121812	12"																				
	KOC-151812	15"																				
	KOC-181812	18"																				
	KOC-211812	21"																				
	KOC-241812	24"																				
	KOC-271812	27"																				
	KOC-301812	30"																				
	KOC-331812	33"																				
KOC-361812	36"																					
Outdoor 24" H Overhead	 <p>1 Full Width Adj Shelf 12" - 24" = 1 Door (LH or RH) 27" - 36" = 2 Door (LH/RH)</p>	<table border="1"> <thead> <tr> <th>ITEM</th> <th>WIDTH</th> </tr> </thead> <tbody> <tr><td>KOC-122412</td><td>12"</td></tr> <tr><td>KOC-152412</td><td>15"</td></tr> <tr><td>KOC-182412</td><td>18"</td></tr> <tr><td>KOC-212412</td><td>21"</td></tr> <tr><td>KOC-242412</td><td>24"</td></tr> <tr><td>KOC-272412</td><td>27"</td></tr> <tr><td>KOC-302412</td><td>30"</td></tr> <tr><td>KOC-332412</td><td>33"</td></tr> <tr><td>KOC-362412</td><td>36"</td></tr> </tbody> </table>	ITEM	WIDTH	KOC-122412	12"	KOC-152412	15"	KOC-182412	18"	KOC-212412	21"	KOC-242412	24"	KOC-272412	27"	KOC-302412	30"	KOC-332412	33"	KOC-362412	36"
	ITEM	WIDTH																				
	KOC-122412	12"																				
	KOC-152412	15"																				
	KOC-182412	18"																				
	KOC-212412	21"																				
	KOC-242412	24"																				
	KOC-272412	27"																				
	KOC-302412	30"																				
	KOC-332412	33"																				
KOC-362412	36"																					
Outdoor 30" H Overhead	 <p>1 Full Width Adj Shelf 12" - 24" = 1 Door (LH or RH) 27" - 36" = 2 Door (LH/RH)</p>	<table border="1"> <thead> <tr> <th>ITEM</th> <th>WIDTH</th> </tr> </thead> <tbody> <tr><td>KOC-123012</td><td>12"</td></tr> <tr><td>KOC-153012</td><td>15"</td></tr> <tr><td>KOC-183012</td><td>18"</td></tr> <tr><td>KOC-213012</td><td>21"</td></tr> <tr><td>KOC-243012</td><td>24"</td></tr> <tr><td>KOC-273012</td><td>27"</td></tr> <tr><td>KOC-303012</td><td>30"</td></tr> <tr><td>KOC-333012</td><td>33"</td></tr> <tr><td>KOC-363012</td><td>36"</td></tr> </tbody> </table>	ITEM	WIDTH	KOC-123012	12"	KOC-153012	15"	KOC-183012	18"	KOC-213012	21"	KOC-243012	24"	KOC-273012	27"	KOC-303012	30"	KOC-333012	33"	KOC-363012	36"
	ITEM	WIDTH																				
	KOC-123012	12"																				
	KOC-153012	15"																				
	KOC-183012	18"																				
	KOC-213012	21"																				
	KOC-243012	24"																				
	KOC-273012	27"																				
	KOC-303012	30"																				
	KOC-333012	33"																				
KOC-363012	36"																					
Outdoor Overhead Blind Corner - 36" Wide	 <p>18" High - No Shelf 24" & 30" - 1 Full Width Adj Shelf All Cabinets 1 Door (LH or RH)</p>	<table border="1"> <thead> <tr> <th>ITEM</th> <th>DIMENSIONS</th> </tr> </thead> <tbody> <tr><td>OIBC-361812</td><td>36"W x 18" H</td></tr> <tr><td>OIBC-362412</td><td>36" W x 24" H</td></tr> <tr><td>OIBC-363012</td><td>36"W x 30" H</td></tr> </tbody> </table>	ITEM	DIMENSIONS	OIBC-361812	36"W x 18" H	OIBC-362412	36" W x 24" H	OIBC-363012	36"W x 30" H												
	ITEM	DIMENSIONS																				
	OIBC-361812	36"W x 18" H																				
	OIBC-362412	36" W x 24" H																				
OIBC-363012	36"W x 30" H																					



Outdoor Inside
Corner Overhead



18" High - No Shelf
24" & 30" - 1 Shelf

All Cabinets 1 Door (LH or RH)

CANNOT be at End of Cabinet Run or Beside Opening

3" Filler panel recommended for door clearance

ITEM	DIMENSIONS
KOIC-241812	24" W x 18" H
KOIC-242412	24" W x 24" H
KOIC-243012	24" W x 30" H

Additional Overhead
Shelves



ITEM	WIDTH
OAS-12	12"
OAS-15	15"
OAS-18	18"
OAS-21	21"
OAS-24	24"
OAS-27	27"
OAS-30	30"
OAS-33	33"
OAS-36	36"



OUTDOOR KITCHEN COUNTERTOP OPTIONS

Aluminum
Countertops &
Options



ITEM	DESCRIPTION
ACT- 28.5	Countertop, 28" D x 1.25" Thick
ACT- 29	Countertop, 29" D x 1.25" Thick
ACT-30.5	Countertop, 30.5"D x 1.25" Thick
ACT- 31	Countertop, 31" D x 1.25" Thick
ACT-32.5	Countertop, 32.5"D x 1.25" Thick
ACT- 33	Countertop, 33"D x 1.25" Thick
ACT- 36.5	Countertop, 36.5"D x 1.25" Thick
ACT- 37	Countertop, 37" D x 1.25" Thick
ABS-4	Backsplash, 4"H x 1"Thick
ABT-16	Bar Top with Risers, 16"D x 1.25"Thick

.090 Aluminum, Powder Coated

ALL Pricing is Cost Per Lineal Inch

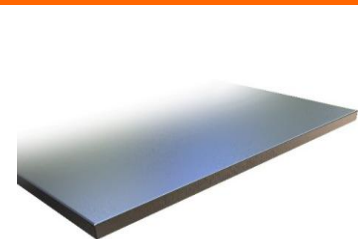
Countertop Overhang is 1/2" on all sides, UNLESS against wall

Bar Top Corner Support Measurements: 8" W x 8"D x 5" H; Center Support Measurements: 12" W x 5" H

Center Supports are needed for every 5' of Bar Top

Countertop Overlap of Bar Top is 9", Edge Overhang of 7"

Stainless Steel
Countertop & Options



	DESCRIPTION
SST-28.5	Countertop, 28"D x 1.25" Thick
SST-29	Countertop, 29" D x 1.25" Thick
SST-30.5	Countertop, 30.5"D x 1.25" Thick
SST-31	Countertop, 31"D x 1.25" Thick
SST-32.5	Countertop, 32.5"D x 1.25" Thick
SST-33	Countertop, 33"D x 1.25" Thick
SST-36.5	Countertop, 36.5"D x 1.25" Thick
SST-37	Countertop, 37"D x 1.25" Thick
SSBS -4	Back Splash, 4"H x 1"Thick
SSBT-16	Bar Top with Risers, 16"D x 1.25"Thick

16G, Food Grade Stainless Steel

ALL Pricing is Cost Per Lineal Inch

Countertop Overhang is 1/2" on all sides, UNLESS against wall

Bar Top Corner Support Measurements: 8" W x 8"D x 5" H; Center Support Measurements: 12" W x 5" H

Center Supports are needed for every 60" of Bar Top

Countertop Overlap of Bar Top is 9", Countertop Edge Overhang of 7"

OUTDOOR KITCHEN ADD-ONS | OPTIONS

Sink & Plumb Options



ITEM	DESCRIPTION
SINK-30	30" Premium Sink and Sprayer Spring Faucet 304, 18G Stainless Steel, Undermount Sink Installation Brushed Satin Finish Sink Basin, Brushed Nickel Finished Spring Faucet Overall Dimensions: 31.25"W x 18"D x 9"H; Basin Dimensions: 29.25"W x 16"D Faucet Requires 20" Clearance Height Minimum 33" Sink Base-- Faucet Behind Sink Basin Minimum 39" Sink Base-- Faucet on Left/Right of Sink Basin
SINK-15	15" Standard Sink and Faucet 201, 18G Stainless Steel, Drop-In Sink Installation, Brushed Satin Finish Sink Basin, Brushed Nickel Finish Faucet Overall Dimensions: 15"W x 15"D x 5.5"H; Basin Dimensions: 13"W x 11.0625"D Minimum 18" Wide Base
WTP	On Demand Water System

12 Volt Pump, Battery Not Included

One 5-gal Fresh Water Tank | One 5-gal Gray Water Tank



Miscellaneous
Accessories



ITEM	DESCRIPTION
4ADALEGS	Set of 4- ADA Compliant Legs, 1.5"-2.5" Tall CANNOT Accommodate Toe Kick
TBH	Towel bar Handle Towel Bar/Grab Handle for maneuvering units Adds 4 1/4" width to cabinet, 3 3/4" width to overall run